



Cherry Lips

CONTRACT CARPET TILES

Sweets
Collection
By Flooring Industries

Product description

Cherry Lips

- ◆ **Cherry Lips** carpet tile is a luxury plain carpet tile, which comes in an outstanding range of modern colourways. Cherry Lips has a dense hard twist surface, that can either be broadloom or either quarter turned creating an attractive visual finish once installed. The product is manufactured from Anso Preforma that has proven durability and good soil hiding properties, making the product a highly suitable choice for a wide range of heavy contract locations.
- ◆ Cherry Lips is a standard stock product and readily available for delivery being supplied to a net work of dealers through out the United Kingdom, via our website @ www.flooringindustries.co.uk

Usages

- ◆ Offices
- ◆ Schools
- ◆ Universities
- ◆ Public Buildings
- ◆ Banks
- ◆ Shops and outlets

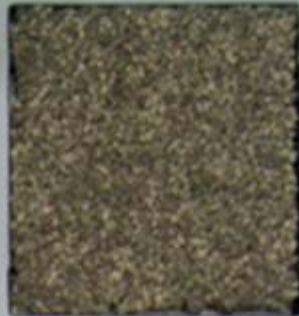
Cherry Lips



Raven Blue



Graphite



Natural Brown



Deeper Navy



Grey Marsh Wood



Smokey Beige



Grey Moon



Metal Grey



Puritan Beige



Blue Shadow



Dove Grey



Natural Beige

Cherry Lips



Bark



Coral



Burgundy



Tan



Orange Blush



Blue Rose



Golden Tan



Pink Coral



Frozen Grape



Sand



Yellow Gold



Gorgeous Red

Cherry Lips



Royal Blue



Green light



Forrest Green



English Blue



Blue Water



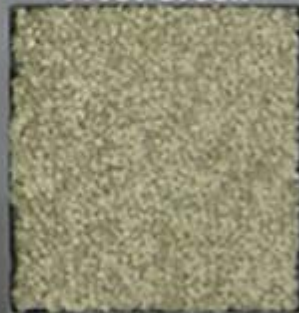
Frost Green



Blue Ice



Blue Mist



Olive



Blue Coral



Blue Orchid



Willow Green

Technical Specification

Cherry Lips

- ◆ 1st June 2008

Warranty

- ◆ 10 years subject to
- ◆ Flooring Industries Conditions

Construction.

- ◆ 1/10th gauge tufted twist cut pile
- ◆ 100% Anso Performa

Total Weight.

- ◆ 4.95kgs sq. mt. (Nom)

Pile Weight.

- ◆ 1050gms sq. mt. (Nom)

Backing.

- ◆ Bitumen with Glass fibre

Dimensions.

- ◆ Pile height 5mm (Nom)
- ◆ Total height 8mm
- ◆ Tile size 50cm x 50cm

Dimensional Stability.

- ◆ EN989. Max -0.2%

Colour Fastness.

- ◆ EN ISO 105-B02/ x12/ E01
- ◆ Light: 5 Water: 4-5
- ◆ Rubbing: 4-5

Static.

- ◆ Permanently antistatic
- ◆ PrEN1815 <2KV
- ◆ Surface Resistance:
- ◆ ISO/DIN: 10965 <1010ohm.

Flammability.

- ◆ EN 13501-1BF-S1 Less than 25mm flame spread on an incline burner. Maximum results achievable for a textile floorcoverings. "1" Best smoke emission result

Comfort.

- ◆ EN1307 Luxury rating LC3

Usage.

- ◆ EN1307: 4 Commercial Use

Castor Test.

- ◆ En1307 rating 2.8Class
- ◆ A continuous use

Acoustic.

- ◆ ISO 140-8 31db
- ◆ ISO 354 Request full results

Thermal Resistance

- ◆ ISO 8354 – 0.071 qm K/W
- ◆ Suitable for Underfloor Heating

Installation

- ◆ Install to BS5325, CFA: best practice guide. Broadloom or Tessellated
- ◆ We reserve all rights for technical improvements

Cherry Lips

Installation Specification

Flooring Industries Standard Installation Specification

Product:

- ◆ **Cherry Lips** carpet tile 50x50cm x 8.0mm thick bitumen backed carpet tile manufactured 100% Anso performa. Available in 36 standard colour ways

Preparation:

- ◆ Installation should be carried out in accordance with the recommendations detailed in British Standard Code of Practice for Installation of Textile Floorcoverings BS 5325: 1983 (or any revision of this standard). It is also recommended that the installation should be in accordance with The Contract Flooring Association Manual for Installation of Textile Floorcoverings (October 1989). If surface tackifiers or other adhesives are to be used, the adhesive manufacturer's guidelines with reference to the Control of Substances Hazardous to Health (COSHH) Regulations and Section 6 of the Health and Safety at Work Act 1974 (as amended by the Consumer Protection Act 1987) should be consulted. Before commencing to lay tiles check that they are from the same batch number, which is stamped on the back of each tile. It is important that batches are not mixed as shades may vary from batch to batch.

Surface Preparation

- ◆ The floor should be clean, level, dry and free from any contaminants such as oil, grease and polish. A new concrete slab should have moisture content, when measured with a hygrometer, less than 75% relative humidity.
- ◆ Dusty floors and surfaces that are very absorbent should be swept clean and the surface sealed with an approved sealer. The sealer should be allowed to dry before the application of any tackifier or adhesive system.
- ◆ Concrete screeds should be sound and any damaged areas or holes should be made good using an approved screeding material.

- ◆ Vinyl tiles should be firmly adhered to the floor and all surface treatments should be removed prior to the application of the tackifier.
- ◆ Floorboards should be level and firmly fixed. Uneven surfaces should be levelled by the application of hardboard or plywood, and the latter may require sealing to prevent the absorption of applied tackifier

Application of surface tackifier

- ◆ In all Installations it is recommended that an all-over surface tackifier method should be used. We recommend an anti-slip surface tackifier such as F.Ball Styccobond F41 applied using a roller and tray. This method ensures that the correct amount of adhesive is applied and avoids over-application, which may cause problems with raised floor panels and timber floors. Never pour surface tackifier directly from the drum onto a raised flooring system. The tackifier must be allowed to dry to clear tacky film in accordance with the manufacturer's instructions. Under no circumstances must the tiles be laid in wet tackifier.

Recommended Materials

- ◆ Flooring Industries Ltd recommends the following materials:
 -
 - ◆ **Tackifer** F41
 - ◆ **Sealer** F70
 - ◆ **Sceding** Stopgap Powder/Liquid system as appropriate
 - ◆ Surface cleaner Styccoclean
 - ◆ Fabricated underlay:
 - ◆ See Flooring Industries Installation guide Surface Preparation timber Floors only if required
 - ◆ Carpet Tiles
 - ◆ Tufted carpet tiles Bitumen backing with glass fibre non-woven fleece

- ◆ Carpet Manufacture and reference:
- ◆ Flooring Industries Ltd P.O Box 290 Watford Hertfordshire Wd24 7LA Telephone no. 01924 406161 Fax no. 01923 211151
- ◆ Reference:
- ◆ Cherry Lips
- ◆ Type:
- ◆ Type N carpet tiles
- ◆ Classification:
- ◆ BS EN1307 LC3 Grade 4 Heavy Commercial
- ◆ Width:
- ◆ 50x 50 cm
- ◆ Height:
- ◆ 8.0 mm
- ◆ Colour Pattern:
- ◆ For complete technical literature or samples phone 01923 211151 or Email: sales@flooringindustries.co.uk
- ◆ WWW.flooringindustries.co.uk