



# **Strawberry Hearts**

**CONTRACT CARPET TILES**

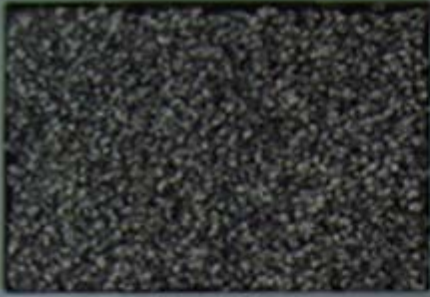
***Sweets***  
**Collection**  
**By Flooring Industries**

# Product description

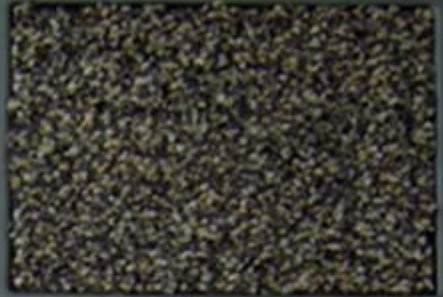
## Strawberry Hearts

- ◆ **Strawberry Hearts** carpet tiles are a multicoloured luxury product, which brings together some of the latest trends in colour with over 24 colours to select from. Strawberry multicoloured texture and design achieves a beautiful broadloom effect once installed. The product is manufactured in the latest patented Antron 6.6 yarn; which has outstanding soil hiding qualities, and durability making it a product suitable for all most all heavy contract locations, particularly where design and image is a paramount consideration.
- ◆ Strawberry Hearts is a standard stock product and readily available for delivery being supplied to a net work of dealers through out the United Kingdom, via our website @ [www.flooringindustries.co.uk](http://www.flooringindustries.co.uk)
- ◆ **Usages**
  - ◆ Offices
  - ◆ Schools
  - ◆ Universities
  - ◆ Public Buildings
  - ◆ Retail shops, outlets

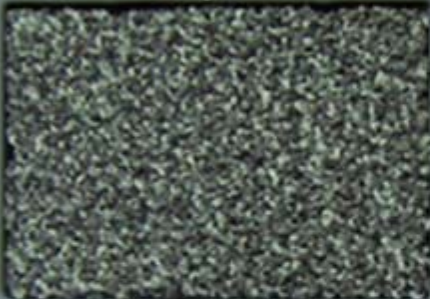
# Strawberry Hearst



Graphite



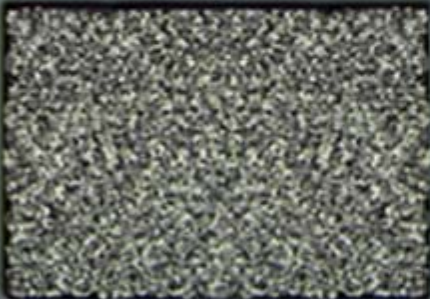
Taupe



Smokey Mount



Gray Metal



Marshwood



Brushed Metal



Shadow Mist

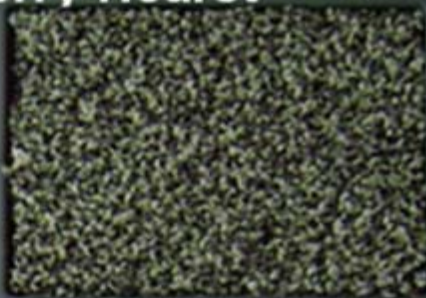


Dove

# Strawberry Hearst



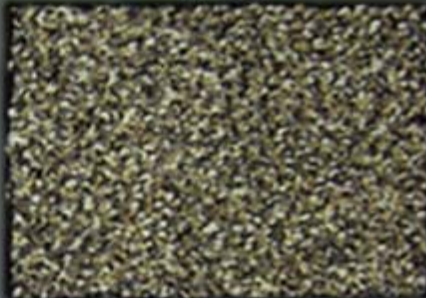
Natural Bark



Moss



Walnut



Spice Green



Camel



Golden Olive



Desert Sun

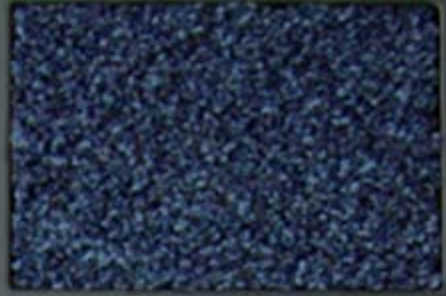


Wheat

# Strawberry Hearst



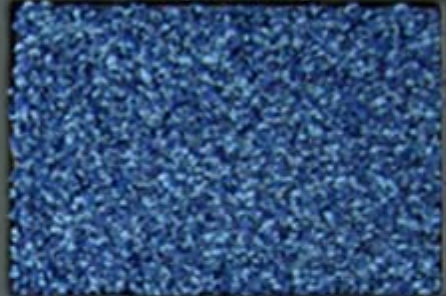
Terra Cotta



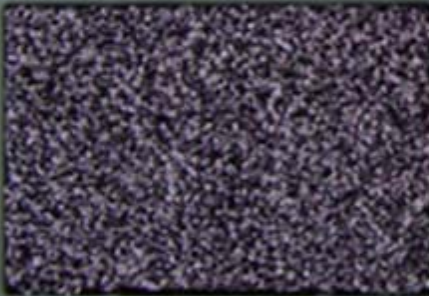
Deeper Navy



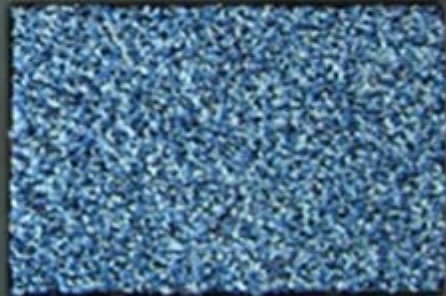
Grape



Regal Blue



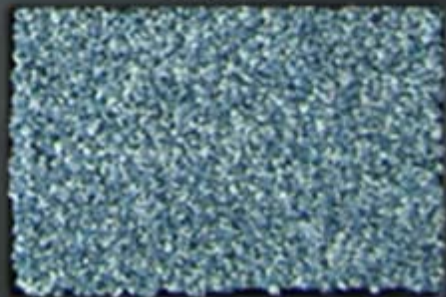
Very violet



Blue Ice



Adobe



English Blue

# Technical Specification

## Strawberry Hearts Carpet Tiles

1st June 2008

### Warranty

- ◆ 10 years subject to
- ◆ Flooring Industries Conditions

### Construction.

- ◆ 1/10 gauge tufted loop
- ◆ PA Antron R 6.6

### Total Weight.

- ◆ 4.655kgs sq. mt. (Nom)

### Pile Weight.

- ◆ 850gms sq.mt. (Nom)

### Backing.

- ◆ Bitumen with Glass fibre

### Dimensions.

- ◆ Pile Height 4.7mm (Nom)
- ◆ Total Height 8.0mm(Nom)
- ◆ Tile size 50cm x 50cm

### Dimensional Stability.

- ◆ EN989. Max -0.2%

### Colour Fastness.

- ◆ EN ISO 105-B02/ x12/ E01
- ◆ Light: 5 Water: 4-5
- ◆ Rubbing: 4-5

### Static.

- ◆ Permanently antistatic:
- ◆ PrEN 1815 <2Kv
- ◆ Surface Resistance:
- ◆ BS ISO/DIS 10965: 1998 (2005)

### Flammability.

- ◆ EN ISO 9239-1 Cfls1

### Comfort.

- ◆ EN1307 Luxury rating LC2

### Usage.

- ◆ EN1307: 4 Heavy contract

### Castor Test.

- ◆ En1307 rating 2.8
- ◆ A continuous use

### Acoustic.

- ◆ ISO 140-8 23db
- ◆ ISO 354 Request full results

### Thermal Resistance

- ◆ ISO 8354 –
- ◆ 0,051qm K/W:0. 079 qm K/W
- ◆ Suitable for Underfloor Heating

### Environmentally

- ◆ Compatible production Emissions, recycled waste. Compatible production. Minimal odours and waste

### Installation

- ◆ Install to BS5325, CFA: best practice guide. Broadloom or Tessellated
- ◆ We reserve all rights for technical improvements

# Strawberry Hearts

## Installation Specification

### Flooring Industries Installation Specification

#### Product:

**Strawberry hearts** 50x50cm x 8.0mm thick bitumen backed carpet tiles manufactured 100% Antron R. 6.6 Available in 12 standard colour ways

#### Preparation:

- ◆ Installation should be carried out in accordance with the recommendations detailed in British Standard Code of Practice for Installation of Textile Floorcoverings BS 5325: 1983 (or any revision of this standard). It is also recommended that the installation should be in accordance with The Contract Flooring Association Manual for Installation of Textile Floorcoverings (October 1989). If surface tackifiers or other adhesives are to be used, the adhesive manufacturer's guidelines with reference to the Control of Substances Hazardous to Health (COSHH) Regulations and Section 6 of the Health and Safety at Work Act 1974 (as amended by the Consumer Protection Act 1987) should be consulted. Before commencing to lay tiles check that they are from the same batch number, which is stamped on the back of each tile. It is important that batches are not mixed as shades may vary from batch to batch.

#### Surface Preparation

- ◆ The floor should be clean, level, dry and free from any contaminants such as oil, grease and polish. A new concrete slab should have moisture content, when measured with a hygrometer, less than 75% relative humidity.
- ◆ Dusty floors and surfaces that are very absorbent should be swept clean and the surface sealed with an approved sealer. The sealer should be allowed to dry before the application of any tackifier or adhesive system.
- ◆ Concrete screeds should be sound and any damaged areas or holes should be made good using an approved screeding material.
- ◆ Vinyl tiles should be firmly adhered to the floor and all surface treatments should be removed prior to the application of the tackifier.
- ◆ Floorboards should be level and firmly fixed. Uneven surfaces should be levelled by the application of hardboard or plywood, and the latter may require sealing to prevent the absorption of applied tackifier

## Application of surface tackifier

In all Installations it is recommended that an all-over surface tackifier method should be used. We recommend an anti-slip surface tackifier such as F.Ball Styccobond F41 applied using a roller and tray. This method ensures that the correct amount of adhesive is applied and avoids over-application, which may cause problems with raised floor panels and timber floors. Never pour surface tackifier directly from the drum onto a raised flooring system. The tackifier must be allowed to dry to clear tacky film in accordance with the manufacturers instructions. Under no circumstances must the tiles be laid in wet tackifier.

## Recommended Materials

Flooring Industries Ltd recommends the following materials: -

**Tackifier** F41

**Sealer** F70

**Screeding** Stopgap Powder/Liquid system as appropriate

**Surface cleaner** Styccoclean

**Fabricated underlay:**

See Flooring Industries Installation guide Surface Preparation timber Floors only if required

## Carpet Tiles

Tufted carpet tiles Bitumen backing with glass fibre non-woven fleece

Carpet Manufacture and reference:

Flooring Industries Ltd P.O Box 290 Watford Hertfordshire Wd24 7LA Telephone no. 01923 211151 Fax no. 01923 818564

## Reference:

Strawberry Hearts

Type:

Type N carpet tiles

Classification:

BS EN1307 LC2 Grade 4 Heavy Contract

Width:

50x 50 cm

Height:

7.2 mm

Colour Pattern:

For complete technical literature or samples phone

01923 211151 or Email: [sales@flooringindustries.co.uk](mailto:sales@flooringindustries.co.uk)